



Woodlands Belmont Hill, Douglas, Isle Of Man, IM1 4NX
Asking Price £799,950

- Stunning detached family home of around 3,700 square feet with self-contained annex, set in leafy Belmont Hill close to central Douglas
- Modern fitted kitchen with central breakfast island, walk-in pantry and utility room, linking conveniently to the adjoining double garage
- Self-contained annex above the garage with kitchenette, shower room and mezzanine level, ideal for guests, extended family or private workspace
- Immaculately maintained since its construction in 2002, presented in true show home condition by the current owners throughout
- Four generously sized double bedrooms on the first floor, including two en suites and a luxurious master suite with dressing room
- Spacious living room opening into a bright conservatory with garden access, creating a welcoming and light-filled family and entertaining space
- Family bathroom featuring a strikingly large bath and contemporary fittings, perfectly complementing the elegant and practical first floor accommodation



Woodlands is an exceptional detached family home circa 3,700 sqft, complete with a self-contained annex. Built in 2002 and maintained in immaculate, show home condition ever since, the property occupies a superb position on Belmont Hill, a leafy and peaceful setting that feels semi-rural while still being just a short walk from the centre of Douglas. This enviable location combines a sense of privacy and tranquillity with easy access to all local amenities, making it a rare find in the area.

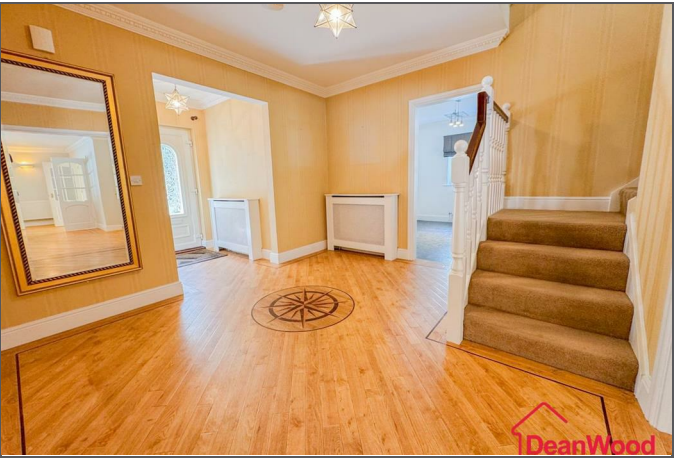
On entering the property, the welcoming hallway with oak flooring provides access to the principal ground floor rooms and a staircase to the first floor. The accommodation is generous and thoughtfully arranged, beginning with a large living room that opens into a bright conservatory. This inviting space is flooded with natural light and offers double doors leading out onto the garden. From the living room, double doors also lead to a further sun room, which itself features access to the garden and a large opening connecting directly to the kitchen. The kitchen is beautifully appointed with fitted units, a central breakfast island and a walk-in pantry beneath the stairs. A utility room is conveniently placed just off the kitchen, linking the house to the double garage. Completing the ground floor is a spacious home office and a cloakroom.

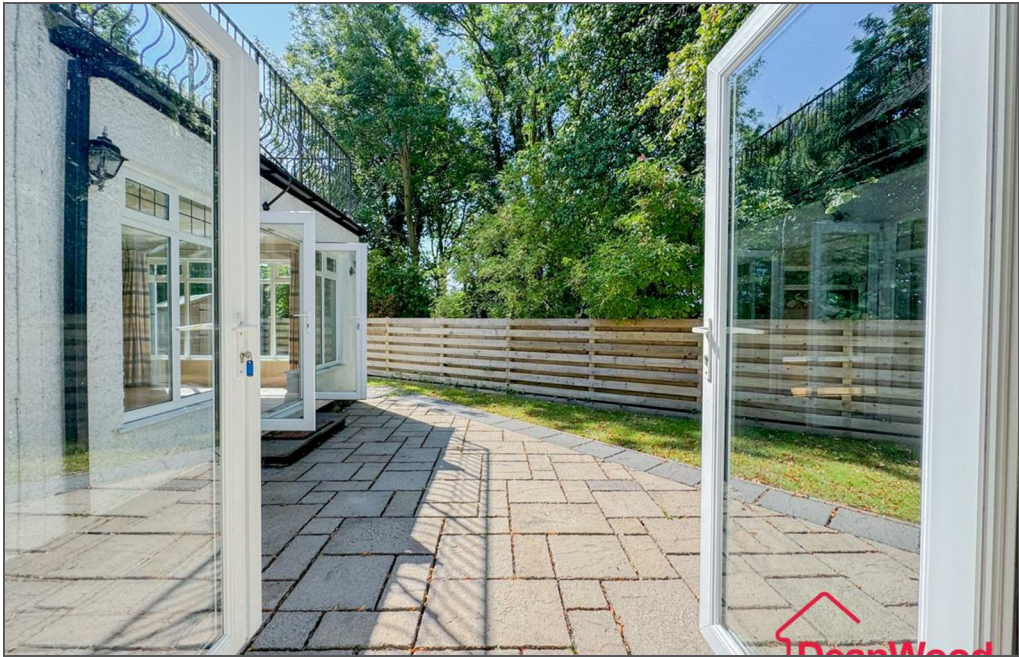
The first floor provides four well-proportioned double bedrooms, two of which are en suite. The master suite is particularly impressive, benefiting from a dressing room and access onto a sun deck via fully glazed doors. The family bathroom, shared by the remaining two bedrooms, features a strikingly large bath and contemporary fittings.

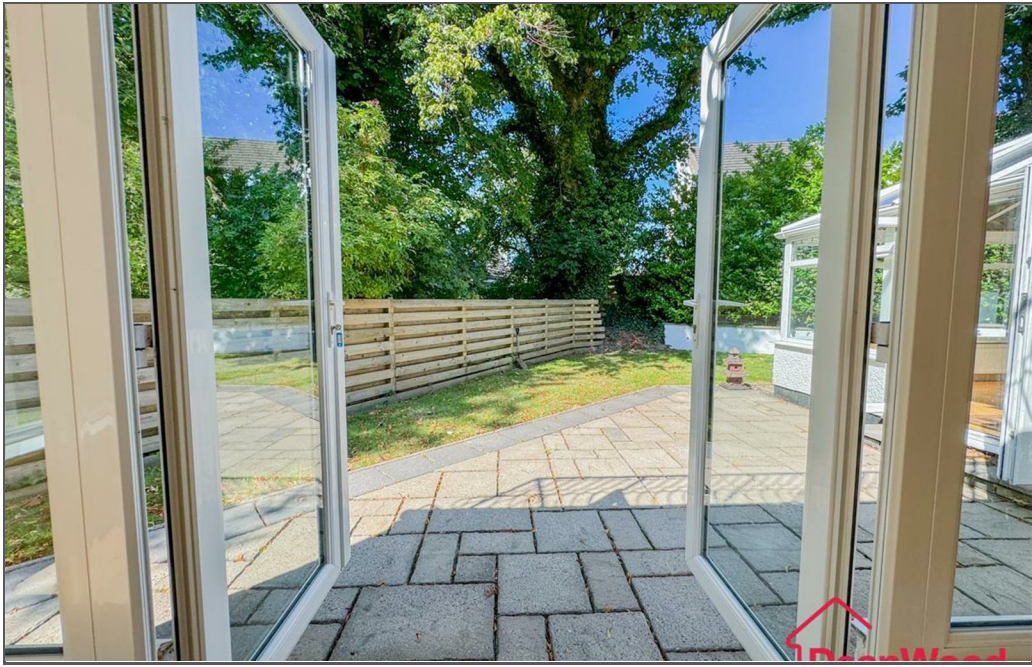
Externally, the home enjoys excellent privacy. To the rear, a paved terrace and lawned garden provide a pleasant outdoor retreat, while the front offers a wide paved driveway with ample parking. Above the garage the self-contained annex, complete with kitchenette, shower room and an additional mezzanine level













Woodlands Belmont Hill, Douglas, Isle Of Man, IM1 4NX





TOTAL FLOOR AREA : 3639 sq.ft. (338.0 sq.m.) approx.

Not to scale-for identification purposes only
Made with Metropix ©2025

DOUGLAS

37 VICTORIA STREET
DOUGLAS
ISLE OF MAN IM1 2LF

T 01624 620606
F 01624 677363
E info@deanwood.co.im

CASTLETOWN

COMPTON HOUSE
9 CASTLE STREET CASTLETOWN
ISLE OF MAN IM9 1LF

T 01624 825995
F 01624 825996
E castletown@deanwood.co.im

RAMSEY

LEZAYRE HOUSE
87 PARLIAMENT STREET
RAMSEY ISLE OF MAN IM8 1AQ

T 01624 816111
F 01624 816588
E ramsey@deanwood.co.im

These particulars are for information purposes only. They do not constitute or form any contract nor should any statement contained herein be relied upon as a representation of fact. Neither the vendor nor DeanWood Agencies Limited ('the firm'), nor any officer or employee of the firm accept liability or responsibility for any statement contained herein. The vendor does not by these particulars, nor does the firm, nor does any officer or any employee of the firm have any authority to make or give any representation or warranty whatsoever as regards the property or otherwise. It is the sole responsibility of any person interested in the property described in these particulars to make all proper enquiries and searches to verify the description of the property and all other particulars herein.

FOR MORE PROPERTIES VISIT OUR WEBSITE @ deanwood.im